

Special Exhibition

# The Lineage of Culture

THE HOSOKAWA FAMILY  
EISEI BUNKO COLLECTION

## List of Works

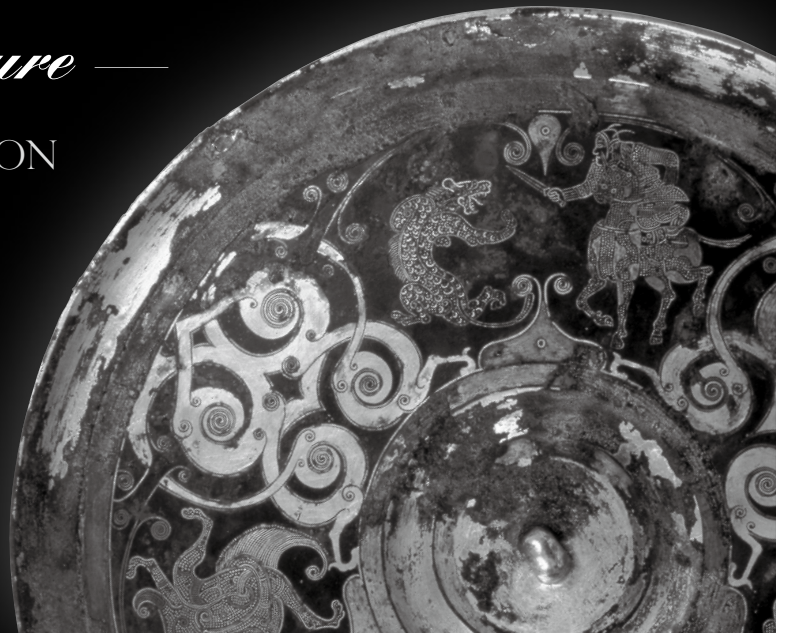
Tuesday, April 20 — Sunday, June 6, 2010

Heiseikan, Tokyo National Museum

Organized by: Tokyo National Museum / Eisei Bunko Museum /  
NHK / NHK Promotions / The Asahi Shimbun

With the support of: Agency for Cultural Affairs

With the sponsorship of: Toyota Motor Corporation / Nissha Printing Co., Ltd.



● Exhibition numbers correspond to the catalogue entry numbers.  
However, the order of the artworks in the exhibition may not necessarily be the same.

● The section of some displayed may also be rotated.

● The symbols before the titles means the following:

◎=National Treasure, ⊙=Important Cultural Property, ○=Important Art Object.

● The rotation schedule is as follows:

- ① 4/20 (Tue)—4/25 (Sun)
- ② 4/27 (Tue)—5/2 (Sun)
- ③ 5/3 (Mon)—5/9 (Sun)
- ④ 5/11 (Tue)—5/16 (Sun)
- ⑤ 5/18 (Tue)—5/23 (Sun)
- ⑥ 5/25 (Tue)—5/30 (Sun)
- ⑦ 6/1 (Tue)—6/6 (Sun)

No.	Title	Artist, etc.	Collection	The rotation schedule						
				①	②	③	④	⑤	⑥	⑦
● — Part I										
Traditions of a Samurai Household: The History and Art Collection of the Hosokawa Family										
Section I — From Warlords to Daimyo: The Hosokawa Family in Kyoto and its Surrounds										
1	Tutelary Deity of the Hosokawa Family		Eisei Bunko Museum, Tokyo							
2	<i>Eigenki</i> (Record of Association between Eigen'an Temple and the Hosokawa Family)		Eisei Bunko Museum, Tokyo (Entrusted to Kumamoto University Library)							
7	Brocade Flag	Granted to Hosokawa Yoriari	Eisei Bunko Museum, Tokyo							
10	◎ Saddle	Horned owl and oak design in mother-of-pearl inlay	Eisei Bunko Museum, Tokyo							
11	◎ Saddle	Reed-script poem design in mother-of-pearl inlay	Eisei Bunko Museum, Tokyo							
12	⊙ Yoroï-Type Armor	White lacing with diagonal corner accents in <i>tsumadori</i> style	Eisei Bunko Museum, Tokyo							
13	Yoroï-Type Armor (Reproduction)	White lacing with diagonal corner accents in <i>tsumadori</i> style	Eisei Bunko Museum, Tokyo							
14	Gusoku-Type Armor with Two-Piece Cuirass	Red lacing	Formerly worn by Hosokawa Tadaoki (Sansai)	Eisei Bunko Museum, Tokyo						
15	Helmet	Knotted headband design with purple lacing	Formerly worn by Hosokawa Tadatoshi	Eisei Bunko Museum, Tokyo						
16	Gusoku-Type Armor with Two-Piece Cuirass		Formerly worn by Hosokawa Mitsunao	Eisei Bunko Museum, Tokyo						
17	Yoroï-Type Armor	Red lacing	Formerly worn by Hosokawa Tsunatoshi	Eisei Bunko Museum, Tokyo						
18	Domaru-Type Armor	Dark blue lacing	Formerly worn by Hosokawa Shigekata	Eisei Bunko Museum, Tokyo						
19	Gusoku-Type Armor with Two-Piece Cuirass	Dark blue and red lacing	Formerly worn by Hosokawa Yoshikuni	Eisei Bunko Museum, Tokyo						
20	Lined Robe (J., <i>Awase</i> )	Repeating dot and tortoiseshell design on light indigo ground	Formerly worn by Hosokawa Tadatoshi	Eisei Bunko Museum, Tokyo						
21	Unlined Robe (J., <i>Hitoe</i> )	Repeating circle design and nine-planet crests on light green ground	Formerly worn by Hosokawa Tadatoshi	Eisei Bunko Museum, Tokyo						
22	Pleated Vest (J., <i>Kataginu</i> )	Peony arabesque design and nine-planet crests on white ground	Formerly worn by Hosokawa Tadatoshi	Eisei Bunko Museum, Tokyo						
23	Surcoat (J., <i>Jinbaori</i> )	Light brown wool with red band	Formerly worn by Hosokawa Tadatoshi	Eisei Bunko Museum, Tokyo						
24	Feathered <i>Jinbaori</i> Surcoat	With nine-planet crest	Formerly worn by Hosokawa Naritatsu	Eisei Bunko Museum, Tokyo						
25	Large Cavalry Standard	With Chinese character in white circle on dark blue ground	Formerly used by Hosokawa Tadatoshi	Eisei Bunko Museum, Tokyo						





No.	Title	Artist, etc.	Collection	The rotation schedule						
				1	2	3	4	5	6	7
122	<i>Nuihaku</i> Robe (Noh Costume)	Flying bird design on gold ground	Eisei Bunko Museum, Tokyo							
123	<i>Nuihaku</i> Robe (Noh costume)	Floral mist on black ground	Eisei Bunko Museum, Tokyo							
124	Headbands (Noh costume)		Eisei Bunko Museum, Tokyo							
125	○ Noh Mask	<i>Okina</i> type	Eisei Bunko Museum, Tokyo							
126	○ Noh Mask	<i>Hannya</i> type	Eisei Bunko Museum, Tokyo							
127	Noh Mask	<i>Kojo</i> type	Usa Jingu Shrine, Oita							
128	Noh Mask	<i>Uba</i> type	Usa Jingu Shrine, Oita							
129	Noh Mask	<i>Waka-otoko</i> type	Usa Jingu Shrine, Oita							
130	Noh Mask	<i>Yase-otoko</i> type	Usa Jingu Shrine, Oita							
131	Noh Mask	<i>Fukai</i> type	Usa Jingu Shrine, Oita							
132	Noh Mask	<i>Sanbaso</i> type	Eisei Bunko Museum, Tokyo							
133	Noh Mask	<i>Kokasshiki</i> type	Eisei Bunko Museum, Tokyo							
134	Noh Mask	<i>Shojo</i> type	Eisei Bunko Museum, Tokyo							
135	Noh Mask	<i>Kotobide</i> type	Eisei Bunko Museum, Tokyo							
136	Noh Mask	<i>Tsurimanako</i> type	Eisei Bunko Museum, Tokyo							
137	Kyogen Mask	<i>Buaku</i> type	Eisei Bunko Museum, Tokyo							
138	Kyogen Mask	<i>Bishamon</i> type	Eisei Bunko Museum, Tokyo							
139	Kyogen Mask	<i>Oto</i> type	Eisei Bunko Museum, Tokyo							
140	Kyogen Mask	<i>Kentoku</i> type	Eisei Bunko Museum, Tokyo							
141	Kyogen Mask	<i>Saru</i> type	Eisei Bunko Museum, Tokyo							
142	Kyogen Mask	<i>Kitsune</i> type	Eisei Bunko Museum, Tokyo							
143	Record of the Setting for <i>Kokin Denju</i> (Transmission of teachings regarding the <i>Kokin Waka Shu</i> poetry anthology)	By Takatsukasa Kanehiro	Eisei Bunko Museum, Tokyo (Entrusted to Kumamoto University Library)							
144	Portrait of Kakinomoto no Hitomaro	Attributed to Unkoku Totetsu	Tokyo National Museum							
145	Letter	Written by Hosokawa Yusai; addressed to Tojo Yukinaga	Archives and Mausolea Department, Imperial Household Agency, Tokyo							
146	Letter of Reply		Archives and Mausolea Department, Imperial Household Agency, Tokyo							
147	Draft of Written Oath	Written by Prince Toshihito	Archives and Mausolea Department, Imperial Household Agency, Tokyo							
148	Certificate of <i>Kokin Denju</i>	Presented to Prince Toshihito	By Hosokawa Yusai Archives and Mausolea Department, Imperial Household Agency, Tokyo							
149	Description of the Setting for <i>Kokin Denju</i>	Copied by Prince Toshihito	Archives and Mausolea Department, Imperial Household Agency, Tokyo							
150	Key to the <i>Kokin Denju</i> Document Chest		Archives and Mausolea Department, Imperial Household Agency, Tokyo							
151	Inventory from the <i>Kokin Denju</i> Document Chest	By Prince Toshihito	Archives and Mausolea Department, Imperial Household Agency, Tokyo							
152	<i>Denshinsho</i> (Notes recorded from teachings regarding the <i>Kokin wakashu</i> poetry anthology)	By Hosokawa Yusai	Archives and Mausolea Department, Imperial Household Agency, Tokyo							
153	<i>Eiga no taigai</i> ("Essentials of Poetic Composition")	Copied by Nakanoin Michikatsu	Eisei Bunko Museum, Tokyo (Entrusted to Kumamoto University Library)							
154	<i>Kokin Waka Shu</i> Poetry Anthology	Copied by Hosokawa Yusai	Eisei Bunko Museum, Tokyo (Entrusted to Kumamoto University Library)							
155	<i>Kokin Waka Rokujo</i> Poetry Anthology	Copied by Hosokawa Yusai	Eisei Bunko Museum, Tokyo (Entrusted to Kumamoto University Library)							
156	Ink Stone	Transmitted to Yusai, China	Archives and Mausolea Department, Imperial Household Agency, Tokyo							
157	Poem Card	By Hosokawa Yusai	Archives and Mausolea Department, Imperial Household Agency, Tokyo							
158	● Long Sword (J., <i>Tachi</i> )	Signed "By Yukihiro of Bungo Province"	By Bungo Yukihiro Eisei Bunko Museum, Tokyo							
162	◎ Buddhist Verse	Calligraphy by Qingzhuo Zhengcheng	China Eisei Bunko Museum, Tokyo							
163	◎ On the Naming of the Heart-Flower Chamber	Calligraphy by Chushi Fanqi	China Eisei Bunko Museum, Tokyo							
166	Gourd Vase	Known as "Gankai"	By Sen no Rikyu Eisei Bunko Museum, Tokyo							
167	Letter	Accompanying "Gankai" Gourd Vase	By Sen no Rikyu Eisei Bunko Museum, Tokyo							
168	Two-Tiered Bamboo Vase	By Sen no Rikyu	Eisei Bunko Museum, Tokyo							
169	Two-Tiered Bamboo Vase	By Hosokawa Sansai	Eisei Bunko Museum, Tokyo							

No.	Title	Artist, etc.	Collection	The rotation schedule						
				1	2	3	4	5	6	7
170	Bronze Vase	With orca-shaped lugs	Eisei Bunko Museum, Tokyo							
171	Chinese Tea Leaf Jar	Known as "Yorimasa"	China	Eisei Bunko Museum, Tokyo						
172	Water Jar	Taro shoot shape	China	Eisei Bunko Museum, Tokyo						
176	Kettle	Pine, bamboo and plum design	Presumed Ashiya ware	Eisei Bunko Museum, Tokyo						
177	Shallow Kettle		Eisei Bunko Museum, Tokyo							
178	Cornered Kettle	Known as "Tomaya" ("Thatched hut")	By Onishi Josei	Eisei Bunko Museum, Tokyo						
179	Cylindrical Kettle		By Onishi Gorozaemon	Eisei Bunko Museum, Tokyo						
183	Chinese Tea Caddy	Bulging base type, Known as "Rikyu Shirifukura"	China	Eisei Bunko Museum, Tokyo						
184	Chinese Tea Caddy	Bulging base type, Known as "Asano Shirifukura"	China	Eisei Bunko Museum, Tokyo						
185	○ Tea Caddy	Shouldered type, Known as "Izumo Katatsuki"	Seto ware	Eisei Bunko Museum, Tokyo						
186	○ Tea Caddy	Shouldered type, Known as "Koshiji"	Seto ware	Eisei Bunko Museum, Tokyo						
187	Tea Container	Peach blossom and peony design in carved red lacquer	China	Eisei Bunko Museum, Tokyo						
188	Tea Container		Eisei Bunko Museum, Tokyo							
189	Tea Scoop	Known as "Yugami" ("Misshapen")	By Sen no Rikyu	Eisei Bunko Museum, Tokyo						
190	Letter	Accompanying "Yugami" Tea Scoop	By Hosokawa Sansai	Eisei Bunko Museum, Tokyo						
192	Tea Bowl	Yuteki ("oil spot") tenmoku type	China	Eisei Bunko Museum, Tokyo						
193	Tea Bowl	Yellow tenmoku type, Known as "Shuko Tenmoku"	China	Eisei Bunko Museum, Tokyo						
195	Tea Bowl Stand	Tortoiseshell design in mother-of-pearl inlay	China	Eisei Bunko Museum, Tokyo						
196	Tea Bowl Stand	Red lacquer	Eisei Bunko Museum, Tokyo							
197	Tea Bowl	Kohiki type, Known as "Ogorai" ("Large Korai Tea Bowl")	Korea	Eisei Bunko Museum, Tokyo						
198	Tea Bowl	Kakinoheta type	Korea	Eisei Bunko Museum, Tokyo						
200	Tea Bowl	With Chinese character for "longevity" in underglaze blue	Vietnam	Eisei Bunko Museum, Tokyo						
201	○ Tea Bowl	Known as "Otogoze", Black Raku ware	By Chojiro	Eisei Bunko Museum, Tokyo						
202	Tea Bowl	With grafted shard	Eisei Bunko Museum, Tokyo							
203	Tea Bowl	With two glazes on alternate halves, Known as "Nenpachi" ("28th day")	Eisei Bunko Museum, Tokyo							
204	List of Utensils for a Tea Ceremony		By Hosokawa Tadaoki	Eisei Bunko Museum, Tokyo						
205	<i>Suki kigigaki</i> (Notes of a tea connoisseur)		By Hosokawa Tadaoki	Eisei Bunko Museum, Tokyo						
207	Illustrated Album of Tea Caddies and Tea Bowls		Eisei Bunko Museum, Tokyo							*Different pages will be shown
216	Mount Fuji, Miho, and Seikenji Temple		Attributed to Sesshu Toyo, Inscription attributed to Zhan Zhonghe	Eisei Bunko Museum, Tokyo						

● — Part 2

An Eye for Beauty: The Moritatsu Collection

Section 1 — Origins of the Collection

227	Idle Talk on a Night Boat (J., <i>Yasen kanna</i> )		By Hakuin Ekaku	Eisei Bunko Museum, Tokyo						
228	Bodhidharma (J., <i>Daruma</i> )		By Hakuin Ekaku	Eisei Bunko Museum, Tokyo						
229	Bodhidharma (J., <i>Daruma</i> )		By Hakuin Ekaku	Eisei Bunko Museum, Tokyo						
230	Portrait of Xutang Zhiyu		By Hakuin Ekaku	Eisei Bunko Museum, Tokyo						
231	Portrait of Daito Kokushi as a Beggar		By Hakuin Ekaku	Eisei Bunko Museum, Tokyo						
232	Portrait of Daito Kokushi as a Beggar		By Hakuin Ekaku	Eisei Bunko Museum, Tokyo						
233	Self-Portrait Inside Zen Circle		Painting and inscription by Hakuin Ekaku	Eisei Bunko Museum, Tokyo						
234	The Ten Realms		By Hakuin Ekaku	Eisei Bunko Museum, Tokyo						
235	Avalokitesvara (J., Kannon) Emerging from a Clam Shell		By Hakuin Ekaku	Eisei Bunko Museum, Tokyo						
236	Avalokitesvara (J., Kannon) over a Lotus Pond		By Hakuin Ekaku	Eisei Bunko Museum, Tokyo						
237	Kannon Inside a Gourd		By Hakuin Ekaku	Eisei Bunko Museum, Tokyo						
238	Budai with One Hand Clapping		By Hakuin Ekaku	Eisei Bunko Museum, Tokyo						
239	Ofuku Treating an Affliction		By Hakuin Ekaku	Eisei Bunko Museum, Tokyo						
240	Zen Circle		By Hakuin Ekaku	Eisei Bunko Museum, Tokyo						
241	Iron Staff		By Hakuin Ekaku	Eisei Bunko Museum, Tokyo						
242	Words of Priest Ganto	Calligraphy by Hakuin Ekaku		Eisei Bunko Museum, Tokyo						
243	"Three walls felled with a single arrow"	Calligraphy by Hakuin Ekaku		Eisei Bunko Museum, Tokyo						
244	Buddhist Verse by Kanzan Egen	Calligraphy by Hakuin Ekaku		Eisei Bunko Museum, Tokyo						
246	Buddhist Verse (With character for "death")		By Hakuin Ekaku	Eisei Bunko Museum, Tokyo						

No.	Title	Artist, etc.	Collection	The rotation schedule						
				1	2	3	4	5	6	7
247	Doll Seller	By Sengai Gibon	Eisei Bunko Museum, Tokyo							
248	Manjusri (J., Monju Bosatsu) Seated on a Lion	By Sengai Gibon	Eisei Bunko Museum, Tokyo							
249	Cherry-Blossom Viewing	By Sengai Gibon	Eisei Bunko Museum, Tokyo							
250	Daito Kokushi	By Sengai Gibon	Eisei Bunko Museum, Tokyo							
251	The Zen Priest Bukei on Retreat	By Sengai Gibon	Eisei Bunko Museum, Tokyo							
252	● Short sword (J., Tanto)	Unsigned, Known as "Hocho Masamune" ("Knife of Masamune")	Eisei Bunko Museum, Tokyo							
253	Mounting for Guardless Sword (J., Aikuchi)	With gold flakes in lacquer	Eisei Bunko Museum, Tokyo							
254	● Short Sword (J., Tanto)	Signed "Norishige"	Eisei Bunko Museum, Tokyo							
255	Mounting for Small Long Sword (J., Chiisagatana)	With vine arabesque design in <i>maki-e</i> lacquer	Eisei Bunko Museum, Tokyo							
256	● Long Sword (J., Katana)	Signed "Mitsutada, Kotoku" in gold inlay	Formerly used by Ikoma, Lord of Sanuki domain (Present-day Kagawa prefecture)	Eisei Bunko Museum, Tokyo						
257	◎ Long Sword (J., Tachi)	Signed "By Morie"	Eisei Bunko Museum, Tokyo							
258	○ Long Sword (J., Katana)	Signed "Kanemitsu, polished by Kotoku" in gold inlay	Eisei Bunko Museum, Tokyo							
259	Short Sword (J., Wakizashi)	Signed "Nobunaga"	Eisei Bunko Museum, Tokyo							
260	Mounting for "Nobunaga" Blade		Eisei Bunko Museum, Tokyo							
261	Long Sword (J., Katana)		Eisei Bunko Museum, Tokyo							
262	Sword Mounting	<i>Kasen</i> style	Eisei Bunko Museum, Tokyo							
263	◎ Sword Guard	With torn fan and cherry blossom design	Attributed to Hayashi Matashichi	Eisei Bunko Museum, Tokyo						
264	○ Sword Guard	Nine-planet crest shape; cherry blossom design in openwork, Signed "Matashichi"	By Hayashi Matashichi	Eisei Bunko Museum, Tokyo						
265	○ Sword Guard	Cherry blossoms in mist design in openwork, Signed "Matashichi"	By Hayashi Matashichi	Eisei Bunko Museum, Tokyo						
266	Sword Guard	Crane roundel design in openwork	Attributed to Hayashi Matashichi	Eisei Bunko Museum, Tokyo						
267	○ Sword Guard	Design of moon reflected in rice paddies, Signed "Made by Nishigaki Nagahisa at age 70"	By Nishigaki Nagahisa	Eisei Bunko Museum, Tokyo						
268	Sword Guard	Nine-planet crest and floral arabesque design in openwork	Attributed to Hirata Hikoza	Eisei Bunko Museum, Tokyo						
269	Pair of Large and Small Sword Guards	Musashino plain design, Signed "Rakuju"	By Kamiyoshi Rakuju	Eisei Bunko Museum, Tokyo						
270	Cap and Collar of Sword Hilt (J., Fuchigashira)	Mushroom and crab design	Attributed to Nishigaki Kanshiro I	Eisei Bunko Museum, Tokyo						
271	Cap and Collar of Sword Hilt (J., Fuchigashira)	Bush clover design	Attributed to Nishigaki Kanshiro II	Eisei Bunko Museum, Tokyo						
272	◎ Sword Guard	Kasugano plain design	By Kaneie	Eisei Bunko Museum, Tokyo						
273	◎ Sword Guard	With Vairavana (J., Bishamonten) figure	By Kaneie	Eisei Bunko Museum, Tokyo						
274	◎ Sword Guard	Design of Yoshitsune in battle at Mure Takamatsu	By Nara Toshinaga	Eisei Bunko Museum, Tokyo						
275	Skewer (J., Kogai)	Sheep design, Relief-molded design by Goto Sojo	Skewer by Goto Kenjo	Eisei Bunko Museum, Tokyo						
276	○ Set of Three Sword Fittings (J., Mitokoromono)	Monkey reaching for the moon design	Ornamental hilt fittings (J., <i>menuki</i> ) and skewer ( <i>kogai</i> ) by Goto Joshin Small knife handle ( <i>kozuka</i> ) by Goto Tsujo	Eisei Bunko Museum, Tokyo						
277	Set of Three Sword Fittings (J., Mitokoromono)	Oxen design	Relief-molded oxen by Goto Joshin Skewer by Goto Renjo	Eisei Bunko Museum, Tokyo						
278	Set of Three Sword Fittings (J., Mitokoromono)	Yorimasa vanquishing the monster design	Design by Goto Teijo	Eisei Bunko Museum, Tokyo						
279	Ornamental Hilt Fittings (J., Menuki)	Nio guardian figures	Attributed to Yokoya Somin and Kikuoka Mitsuyuki	Eisei Bunko Museum, Tokyo						
280	○ Small Knife Handle (J., Kozuka)	Peony and lion design	By Nara Toshinaga	Eisei Bunko Museum, Tokyo						
281	Small Knife Handle (J., Kozuka)	Tea scoop case design	By Tsuchiya Yasuchika	Eisei Bunko Museum, Tokyo						
282	Small Knife Handle (J., Kozuka)	Hanshan and Shide design	By Sugiura Joi	Eisei Bunko Museum, Tokyo						
<b>Section 2 — Patron of the Arts</b>										
283	◎ Black Cat		By Hishida Shunso	Eisei Bunko Museum, Tokyo (Entrusted to Kumamoto Prefectural Museum of Art)						
284	◎ Fallen Leaves		By Hishida Shunso	Eisei Bunko Museum, Tokyo (Entrusted to Kumamoto Prefectural Museum of Art)						
285	The Bonfire		By Yokoyama Taikan	Kumamoto Prefectural Museum of Art						
286	Moonless Night from a Mountain Window		By Yokoyama Taikan	Eisei Bunko Museum, Tokyo (Entrusted to Kumamoto Prefectural Museum of Art)						

No.	Title	Artist, etc.	Collection	The rotation schedule						
				1	2	3	4	5	6	7
287	Persimmon Tree in Fall Colors	By Yokoyama Taikan	Eisei Bunko Museum, Tokyo (Entrusted to Kumamoto Prefectural Museum of Art)							
288	Lao Tzu	By Yokoyama Taikan	Kumamoto Prefectural Museum of Art							
289	Hanshan and Shide	By Yokoyama Taikan and Shimomura Kanzan	Eisei Bunko Museum, Tokyo							
290	Two Women	By Shimomura Kanzan	Eisei Bunko Museum, Tokyo							
291	Priest Hoitsu	By Kaburaki Kiyokata	Eisei Bunko Museum, Tokyo							
293	Yu Rang	By Hirafuku Hyakusui	Eisei Bunko Museum, Tokyo (Entrusted to Kumamoto Prefectural Museum of Art)							
294	Legend of the Healing Spring	By Kawabata Ryushi	Eisei Bunko Museum, Tokyo							
295	Birds and Flowers (Plum and Oak)	By Shindo Reimei	Eisei Bunko Museum, Tokyo							
296	Crane and Turkey	By Kobayashi Kokei	Eisei Bunko Museum, Tokyo (Entrusted to Kumamoto Prefectural Museum of Art)							
297	◎ Tresses	By Kobayashi Kokei	Eisei Bunko Museum, Tokyo (Entrusted to Kumamoto Prefectural Museum of Art)							
298	Peacock	By Kobayashi Kokei	Eisei Bunko Museum, Tokyo							
299	Maiko Girl	By Tsuchida Bakusen	Tokyo National Museum							
300	The Blush of Rain	By Kawai Gyokudo	The National Museum of Modern Art, Tokyo							
301	The Road	By Paul Cézanne	Eisei Bunko Museum, Tokyo							
302	Woman Bathing	By Auguste Renoir	Ishibashi Foundation Bridgestone Museum of Art, Tokyo							
303	Striped Jacket	By Henri Matisse	Ishibashi Foundation Bridgestone Museum of Art, Tokyo							
304	Chinese Dance	By Kume Tamijuro	Private Collection							
306	Lamasery in Chengde	By Yasui Sotaro	Eisei Bunko Museum, Tokyo							
307	The Forbidden City	By Umehara Ryuzaburo	Eisei Bunko Museum, Tokyo							
<b>Section 3 — Encounter with Eastern Art</b>										
308	◎ Large Jar	With gold, silver, and glass inlay	From Jincun, near Luoyang, Henan Province, China	Eisei Bunko Museum, Tokyo						
309	● Mirror	Figure on horseback, animal and phoenix design in gold and silver inlay	From Jincun, near Luoyang, Henan Province, China	Eisei Bunko Museum, Tokyo						
310	○ Tubular Metal Fitting	Bird and animal design in gold and silver inlay	China	Eisei Bunko Museum, Tokyo						
311	● Dish	Bronze, Bird, animal, and cloud design in gold	China	Eisei Bunko Museum, Tokyo						
312	◎ Male Figure	Silver	From Jincun, near Luoyang, Henan Province, China	Eisei Bunko Museum, Tokyo						
313	◎ Two-Handled Cup	Gold-plated silver, With incised design	From Jincun, near Luoyang, Henan Province, China	Eisei Bunko Museum, Tokyo						
314	◎ Cup	Silver	From Jincun, near Luoyang, Henan Province, China	Eisei Bunko Museum, Tokyo						
315	◎ Cup	Silver	From Jincun, near Luoyang, Henan Province, China	Eisei Bunko Museum, Tokyo						
317	Pagoda	From the 84,000 pagodas of Qian Hongchu	China	Eisei Bunko Museum, Tokyo						
318	Tripod Incense Burner	Gilt Bronze, With Chinese lion-shaped handle and animal face design	China	Eisei Bunko Museum, Tokyo						
319	Nine-Pronged Vajra Bell	Bronze		Eisei Bunko Museum, Tokyo						
320	○ Female Figure	Three-color glaze ware	China	Eisei Bunko Museum, Tokyo						
321	○ Chinese Lion	Three-color glaze ware	China	Eisei Bunko Museum, Tokyo						
322	○ Horse	Three-color glaze ware	China	Eisei Bunko Museum, Tokyo						
323	○ Horse	Three-color glaze ware	China	Eisei Bunko Museum, Tokyo						
324	◎ Bowl	Flower petal design, Three-color glaze ware	China	Eisei Bunko Museum, Tokyo						
325	◎ Tripod Bowl	Auspicious flower design, Three-color glaze ware	China	Eisei Bunko Museum, Tokyo						
326	◎ Vase	White glaze; peony design with sgraffito on black ground	Cizhou ware, China	Eisei Bunko Museum, Tokyo						
327	Vase	White porcelain	Ding ware, China	Eisei Bunko Museum, Tokyo						
328	○ Dish	Pale blue glaze with red splashes	Jun ware, China	Eisei Bunko Museum, Tokyo						
329	Ewer	Porcelain, Peony and peacock design in overglaze enamels and gold	Jingdezhen ware, China	Eisei Bunko Museum, Tokyo						
330	Vase	Avalokitesvara (J, Kannon) shape; plum tree design in underglaze blue	Jingdezhen ware, China	Eisei Bunko Museum, Tokyo						
331	○ Flower Pots	Female Immortals design in overglaze enamels	Jingdezhen ware, China	Eisei Bunko Museum, Tokyo						
332	○ Lidded Containers	Peach-blossom red glaze	Jingdezhen ware, China	Eisei Bunko Museum, Tokyo						

No.	Title	Artist, etc.	Collection	The rotation schedule							
				1	2	3	4	5	6	7	
333	○ Vase	Design of Western figures in colored enamels	China	Eisei Bunko Museum, Tokyo							
334	Lidded Sake Cup with Tall Foot	With gold enamel	Jingdezhen ware, China	Eisei Bunko Museum, Tokyo							
335	Dish	Yellow glaze; bird design in sgraffito on white ground	Iran	Eisei Bunko Museum, Tokyo							
336	Dish	White glaze; design of figures in overglaze enamel	Iran	Eisei Bunko Museum, Tokyo							
337	Dish	White glaze; figure on horseback design in overglaze enamel	Iran	Eisei Bunko Museum, Tokyo							
338	Dish	White glaze; figures under tree design in overglaze enamel	Iran	Eisei Bunko Museum, Tokyo							
339	◎ Seated Buddha (J., Nyorai)		China	Eisei Bunko Museum, Tokyo							
340	◎ Seated Bodhisattva (J., Bosatsu) with One Leg Pendent	Stone	Possibly from Baoqingsi temple, Xi'an, Shaanxi province, China	Eisei Bunko Museum, Tokyo							
342	Standing Bodhisattva (J., Bosatsu)		China	Eisei Bunko Museum, Tokyo							
343	◎ Seated Buddha (J., Nyorai)		Possibly from Qinglongsi temple, Xi'an, Shaanxi province, China	Eisei Bunko Museum, Tokyo							
345	Seated Bodhisattva (J., Bosatsu)		Possibly from Baoqingsi temple, Xi'an, Shaanxi province, China	Eisei Bunko Museum, Tokyo							
346	◎ Buddhist Triad Niche Carving	Signed "Yao Yuanjing"	Possibly from Baoqingsi temple, Xi'an, Shaanxi province, China	Tokyo National Museum							
347	Standing Tara		India	Eisei Bunko Museum, Tokyo							
348	Seated Manjusri (J., Monju Bosatsu)		India	Eisei Bunko Museum, Tokyo							
349	Standing Vishnu		India	Eisei Bunko Museum, Tokyo							
354	◎ Poem for General Fu Bo		By Huang Tingjian	Eisei Bunko Museum, Tokyo							
Reference Exhibits	Letter	With the seal of Oda Nobunaga		Eisei Bunko Museum, Tokyo (Entrusted to Kumamoto University Library)							
Reference Exhibits	Letter	With the seal of Oda Nobunaga		Eisei Bunko Museum, Tokyo (Entrusted to Kumamoto University Library)							
Reference Exhibits	Letter	With the seal of Oda Nobunaga		Eisei Bunko Museum, Tokyo (Entrusted to Kumamoto University Library)							
Reference Exhibits	Document	With the seal of Oda Nobunaga		Eisei Bunko Museum, Tokyo (Entrusted to Kumamoto University Library)							

● Floor plan of "THE LINEAGE OF CULTURE — THE HOSOKAWA FAMILY EISEI BUNKO COLLECTION"

**Part 1 — Traditions of a Samurai Household:**  
The History and Art Collection of the Hosokawa Family

**Part 2 — An Eye for Beauty:**  
The Moritatsu Collection

